

Six Chuter International LLC

SERVICE BULLETIN

Service bulletins will be distributed to all operators by the manufacturer when no unsafe condition exists that could lead to an un-airworthy condition, but a service issue has become repetitive for which the manufacture has developed a design change, or service procedure change that will contribute to the improvement or convenience of operation or maintenance of the aircraft. Service bulletin changes are not mandatory to maintain the aircraft's compliance with ASTM Standards.

Tuesday, June 12, 2012 SB-LEGEND 2012-01

Repeating symbols:

Please pay attention to the following symbols throughout this document emphasizing particular information.

- ▲ **WARNING:** Identifies and instruction, which if not followed, may cause serious injury or even death.
- **CAUTION:** Denotes an instruction which if not followed, may severely damage the aircraft or could lead to suspension of warranty.
- ◆ **NOTE:** Information useful for better handling.

1) Planning Information

1.1. Aircraft affected

All versions of the aircraft type:

- Legend XL with Variable C.G. Adjuster. (Both 582 and Paragon 912 Models)

1.2. Concurrent SD/SB/SL

There are no concurrent directives, letters or bulletins with this Service Bulletin.

1.3. Reason

The previous standard canopy risers used on Six Chuter Legend's with the variable adjuster have been "High Energy" brand. This company is no longer producing those risers. We have now switched to the vendor "Apco" for the standard risers. These risers are specifically designed and produced by Apco for the Legend XL either with Rotax 582 or Rotax 912, flying either with the Apco Mark IV series wing or with the Performance Design Sunriser wings. These risers have been flight tested on both models and provide correction for torque with no additional rapid links required. The rear riser is also one inch higher that helps prevent "lock out" of canopy during the "kiting" (inflation) for takeoff phase.

1.4. Compliance

There is no mandatory requirement. This letter is issued to owners who might be interested in purchasing the newer risers either to improve trim, or to replace risers that are showing wear.

1.5. Approval

The technical content of this document has been approved by Six Chuter International LLC Safety Staff.

2) Material Information

- 2.1 **Material – cost and availability** Available from Six Chuter International LLC parts center 360 904-8766 or on line at <http://sixchuter.mybigcommerce.com/apco-risers-for-six-chuter-models/> Retail cost is \$159.95 not including shipping
- 2.2 **Company support information** These risers are now the standard part for all Experimental and Special Light Sport powered parachutes manufactured by Six Chuter International LLC
- 2.3 **Material required per Aircraft** These risers connect to the c.g. adjuster bracket using #6 oval or 9/32nd Delta Rapid Links

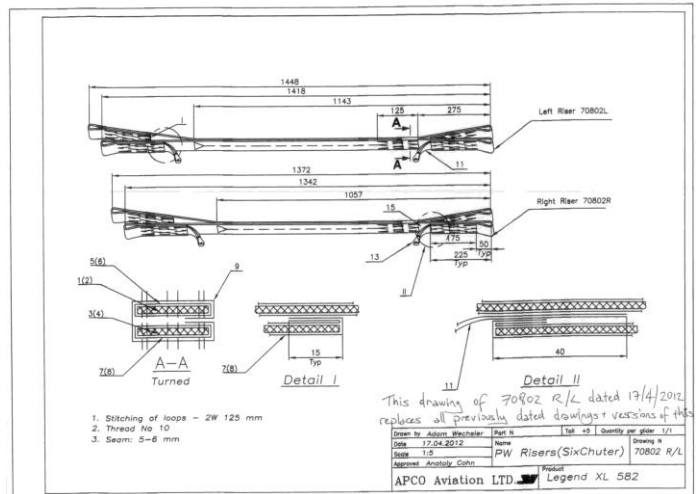
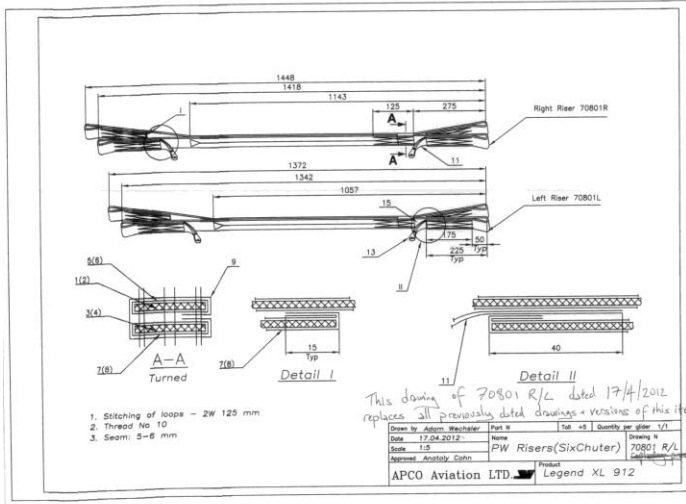
Six Chuter International LLC

SERVICE BULLETIN

3) Accomplishment / Instructions

3.1) Instructions

- 3.1)1. Part number 70802 is required for Legend Models with Rotax 582 installation
- 3.1)2. Part number 70801 is required for Legend Models with Rotax 912 installations



- 3.1)3. The longer set of risers installs on the left outrigger when installing 70802 for Rotax 582. The longer set of risers installs on the right outrigger when installing 70801 for Rotax 912.
- 3.1)4. The lower end of the risers that attach to the c.g. adjuster is the end with the risers at even length. The top of each riser set is the one with the rear riser that is about one inch longer than the front riser.
- 3.1)5. The risers are attached to the c.g. adjusters with the longer rear riser at the top and to the rear and with the pulleys oriented on the front of the riser set.
- 3.1)6. If the risers have the plastic sleeves on the upper end of the risers, remove them and place them on the lower end of the risers (even length). Installation of these sleeves is not mandatory but will help reduce abrasion of the risers.
- 3.1)7. **◆NOTE** Check your maintenance manual for authorization privileges for this installation:
 - 3.1)7.1. Owners of Experimental Light Sport may complete this installation
 - 3.1)7.2. Owners of Special Light Sport must have this installation completed by a Repairman with Maintenance Rating or higher.

3.2) Inspection ▲ WARNING

- 3.2)1. Insure that the steering lines are routed on top of the outrigger during canopy lay out. Do not kite the canopy with the steering line under the outrigger.
- 3.2)2. Insure that the steering lines are properly measured using the appropriate method and instructions with the specific canopy installed.
- 3.2)3. We always recommend that the pilot/operator practice kiting the canopy at least once to check lines and rigging, before attempting flight.

3.3) Summary

- 3.3)1. This service bulletin is not mandatory and is issued as a service to owners of Six Chuter Legend series that use the variable adjuster system instead of the adjustable c.g. tubes found older models. This riser system can be used on older models but only if the c.g. tubes are set to equal lengths before installing the riser set.